

# Continuous Capturing

Temperature measured by PT-U80 convert Graph below in real time  
 The Data stored is stored into simple report or CVS date or Graph (JPEG)

Start Continuous Capturing

Finish Continuous Capturing

Reset Continuous

Display Current PC Time

Switch ON/OFF Specified

Specify Starting Capturing Time and Finishing Capturing Time

Timer status

Enter Max Temperature of manual-scaling

Switch AUTO/MANUAL for Graph-drawing

Enter Minimum Temperature of manual-scaling

Enter Max Time of manual-scaling

Display current Temperature Value

Display current High Alarm Temperature Value

Display current Emissivity Value

Log-on Optex Website

Store Data List by Report format or CSV file format

specify Capture Interval

The temperature date stored are indicated in the Graph

Display current Room Temperature Value

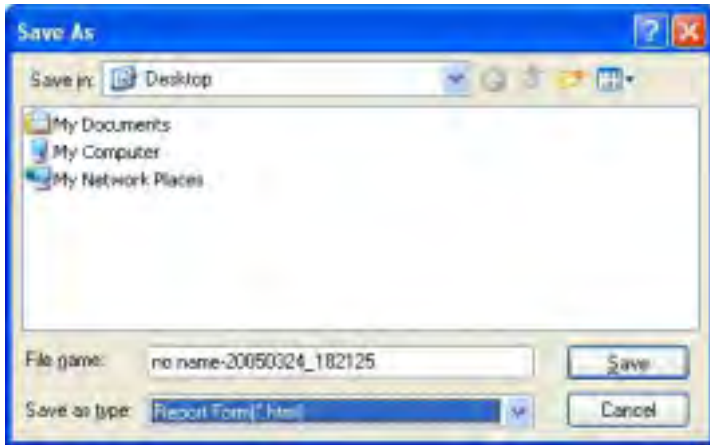
Display current Low Alarm Temperature Value

## Sample) Make Report form with temperature data measured by PT-U80

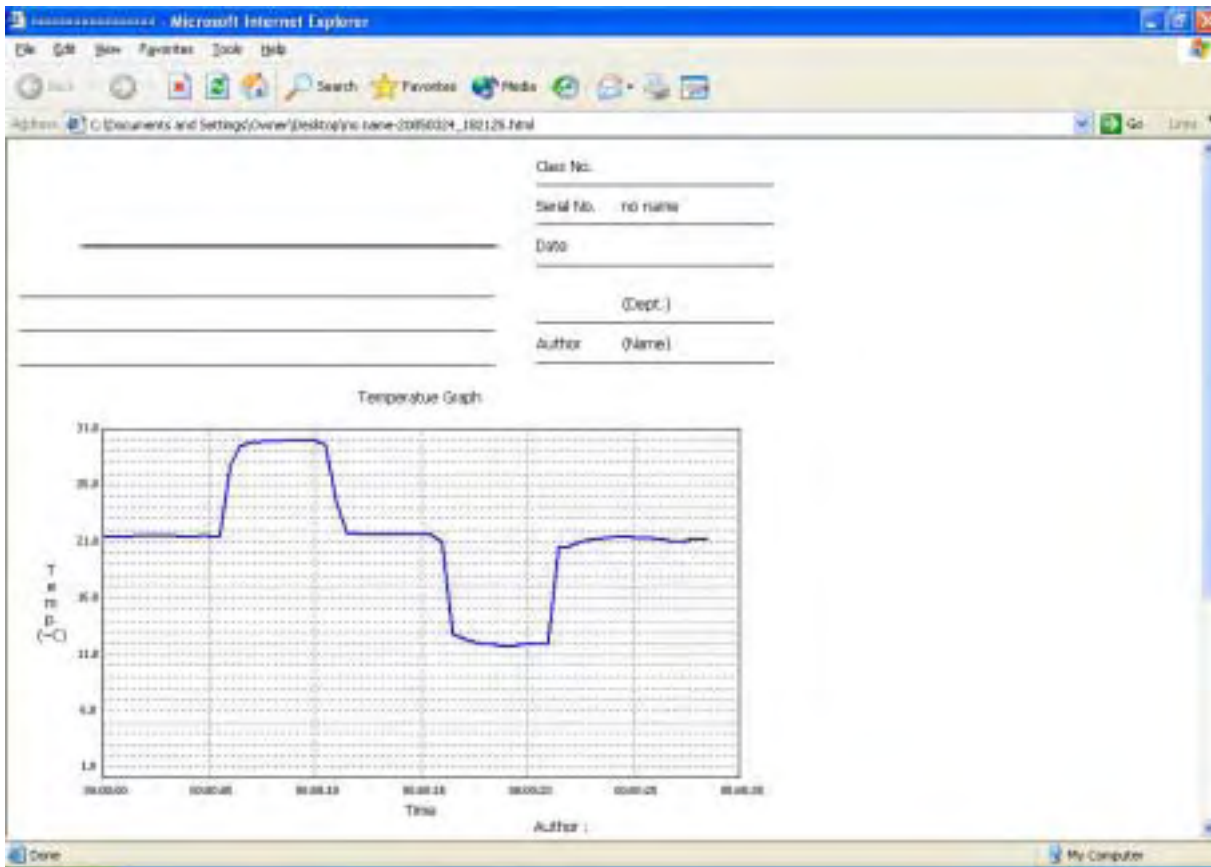
- 1) Connect PT-U80 to PC then activate "THERMO HUNTER" program
- 2) Select "Continuous Capturing" on TAB
- 3) Select capturing interval on 5 (500m sec at Default)
- 4) Push 2 to start recording
- 5) Push 3 to stop recording
- 6) Push button 3 to appear Button 1. Push button 1 to appear store dialogue. (Refer to below drawing)



7) Select report format from dialogue file then push button "Store" to complete



8) Refer to Report Format below. To click "W" located upper-right to edit Report in Microsoft Word



**TASHIKA BOEKI SHOKAI K.K.**

1-12, Kaiyo-cho, Ashiya, 659-0035, JAPAN

Tel: + 81-797-23-9035 Fax: + 81-797-23-2105

e-mail: sales@tashika.co.jp URL: www.tashika.co.jp