

Thermal Infrared Camera

USB2.0 / Ethernet

Spectral sensitivity characteristics

8 - 14 μ m

Artray Thermo Camera series is equipped with USB2.0/Ethernet interface that transfers 14 bit high speed raw data collected by microbolometer directly.

ARTCAM-320-THERMO-WOM

USB2.0

Effective Pixels : QVGA 320(H)x240(V)
Focal Length : f=8mm 50°(H)x37°(V)
Dimensions : 72(W)x61.7(H)x115.8(D)mm
Frame Rate : 60 fps



QVGA Size

High temperature range thermal infrared camera

Up to 1200°C detection!

ARTCAM-320-THERMO-H1200

ARTCAM-640-THERMO-WOM

USB2.0

Effective Pixels : VGA 640(H)x480(V)
Dimensions : 82(W)x85.5(H)x120.5(D)mm



Frame Rate : 60 fps
Focal Length : f=50mm 50°(H)x37°(V)
(Option)

VGA Size

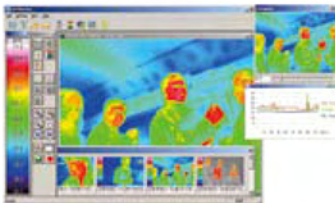
USAGE

Quality Control
Surveillance
Equipment/Building Inspection
Medical Inspection / Diagnosis
Research & Development
Image Processing
Fire Alert
Production Management

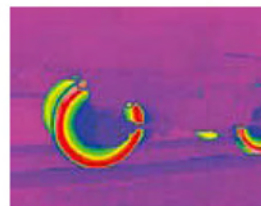
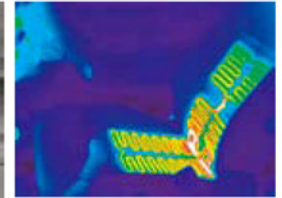
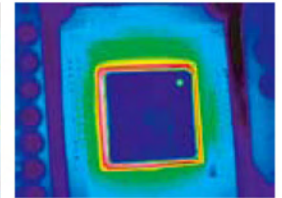
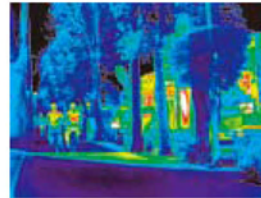
ARTCAM-320-THERMO-LAN3

ETHERNET

Effective Pixels : QVGA 320(H)x240(V)
Focal Length : f=8mm 50°(H)x37°(V)
Dimensions : 72(W)x61.7(H)x115.8(D)mm
Frame Rate : 30 fps



▲ Viewer Software



Specifications

Detector Type : Uncooled Microbolometer Option : Software Development Kit(SDK)
(Built in peltier device) IR Lens (Germanium) f=100mm, 50mm, 15mm(640-THERMO)

Pixel Pitch : 23.5 μ m

f=100mm, 75mm, 35mm, 25mm, 16mm

Detected Wavelength : 8 - 14 μ m

Ultra wide lens 120°, 90°, 70°

Output : 14 bit digital output

• Operating Systems : Windows XP/Vista/7

Interface : USB2.0 / Ethernet

• Recommended CPU : 2.8GHz or above

Power : DC12V(AC adapter)

Temperature Range : -40~540°C

Windows XP, VISTA, 7 viewer software is bundled
Temperature measurement has never been this easy

TASHIKA - JAPAN